

Year 2 Art Knowledge Organiser - Drawing

Previous knowledge required: pattern/texture, line types, primary and secondary colours

Tone	The lightness or darkness of something
Pattern	A design created by a repeated shape
Texture	Texture is the way something feels to the touch or looks to the eye
Viewfinder	A viewfinder helps to focus on a specific part of an object before drawing it
Layering	Using different media to build effect. For example, pencil on pastels or different colours



The Burning of London by Samuel Rolle:



Small girl by Ephrem Kouakou

Tone

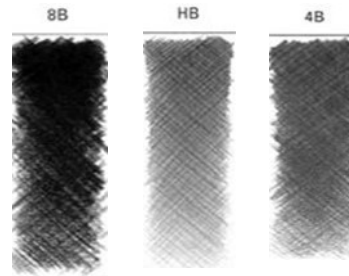


Lighter

Darker

You can create a lighter tone by pressing your pencil lightly on your paper or you can achieve a darker tone by using a heavier pressure.

You can also use different grades of pencils to change the tone



Tools:



Pencils HB 8B 4B



Charcoal

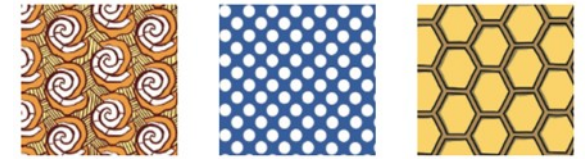


Pastels



Viewfinder

Pattern examples



repeated pattern



random pattern

Texture examples:

